

# PRIME DAILY

October 8, 2025



## S&P 500 Snaps 7-Day Winning Streak, Gold Surges Above \$4000

Wall Street indexes declined on Tuesday, led by losses in technology and AI stocks after a report raised questions about Oracle's cloud margins.

Tech stocks pulled back following a week-long rally that pushed major indexes to record highs. Despite Tuesday's decline, AI optimism remains a key support for the sector.

Oracle fell 2.4% during the session and another 0.5% after market hours, following The Information's report that its chip rental margins were far slimmer than expected, casting doubt on its AI ambitions.

Tesla dropped nearly 5% after unveiling low-cost versions of its Model 3 and Model Y. Analysts deemed the pricing still too high to boost flagging vehicle sales meaningfully.

The ongoing U.S. government shutdown may have contributed to selling pressure, though traders have mainly overlooked the suspension of non-essential operations. Lawmakers remain deadlocked over a temporary funding bill, with Democrats demanding enhanced Obamacare tax credit extensions.

The shutdown has indefinitely delayed key economic data, including the monthly jobs report scheduled for release on Friday. This data vacuum has created uncertainty around the Fed's rate outlook, although a quarter-point cut later this month remains widely expected. Remarks from Fed officials, including Chair Powell, and minutes from the latest FOMC meeting may provide clarity.

Bitcoin reached an all-time high above \$126,000, driven by record spot ETF inflows and "debasement trade" flows linked to the shutdown. It has since retreated to \$122,263 after overheating signals triggered profit-taking, dragging down crypto-exposed stocks, such as MicroStrategy.

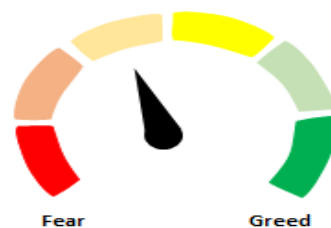
Oil prices edged higher on Wednesday as markets absorbed OPEC+'s decision to restrain November production increases, easing concerns about oversupply.

Gold surged past \$4,000 per ounce to a record high on Wednesday, driven by safe-haven demand amid economic and geopolitical uncertainty and expectations of further Fed rate cuts.

Nifty continued its upward journey for the fourth day in a row, but the session ended on a subdued note. The positional trend of the Nifty remains positive, as it is positioned above its 20-day EMA. Immediate resistance is now placed at the swing high of 25220, followed by 25330. On the downside, the immediate support level has shifted upward to 24,930.

Market players' focus will be on several key catalysts: The start of Q2 FY26 corporate earnings and management commentary, IPO activity, FOMC decision, and any potential progress on the anticipated India-US trade deal.

**Indian markets are expected to open muted due to sluggish global cues.**



### Global Equity Indices

	Close	Abs. Change	% Change
Indian Indices			
Sensex	81,927	136.6 ▲	0.17%
Nifty	25,108	30.6 ▲	0.12%
Midcap	58,289	274.3 ▲	0.47%
Small cap	17,983	55.4 ▲	0.31%
US Indices			
Dow Jones	46,603	-92.0 ▼	-0.20%
S&P 500	6,715	-25.7 ▼	-0.38%
Nasdaq	22,788	-153.3 ▼	-0.67%
European Indices			
FTSE	9,484	4.4 ▲	0.05%
DAX	24,386	7.5 ▲	0.03%
CAC	7,975	3.1 ▲	0.04%
Asian Indices			
Shanghai	3,883	0.0 ▬	0.00%
Hang Seng	26,711	-246.8 ▼	-0.92%
Nikkei	47,965	20.5 ▲	0.04%

### Indices Futures

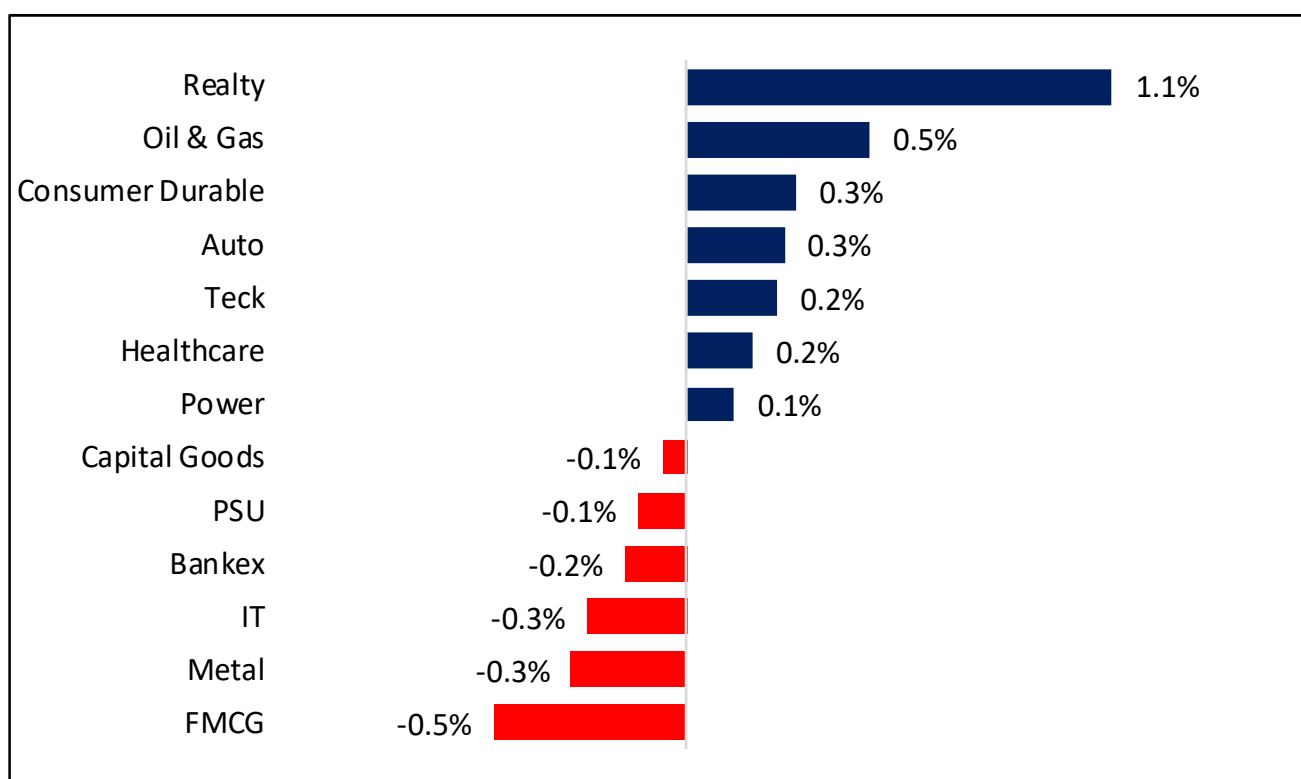
	Close	Abs. Change	% Change
IFSC Nifty			
IFSC Nifty	25,226	9.0 ▲	0.04%
US Indices			
Dow Jones	46,902	50.0 ▲	0.11%
S&P 500	6,771	9.5 ▲	0.14%
Nasdaq	25,087	48.0 ▲	0.19%
European Indices			
FTSE	9,537	12.5 ▲	0.13%
DAX	24,516	11.0 ▲	0.04%
Asian Indices			
Hang Seng	26,731	-265.0 ▼	-0.98%
Nikkei	48,000	60.0 ▲	0.13%

## Nifty50 Index Contributors

Top Five (Positive Contributors)		
Stock	Points	% Change
HDFCBANK	30.1	0.12
ICICIBANK	19.5	0.08
BHARTIARTL	15.4	0.06
RELIANCE	14.5	0.06
BAJFINANCE	4.4	0.02

Bottom Five (Negative Contributors)		
Stock	Points	% Change
AXISBANK	-16.2	-0.06
INFY	-13.7	-0.05
SBIN	-8.5	-0.03
TATAMOTORS	-6.7	-0.03
KOTAKBANK	-6.1	-0.02

## BSE Sectoral Leaders & Laggards

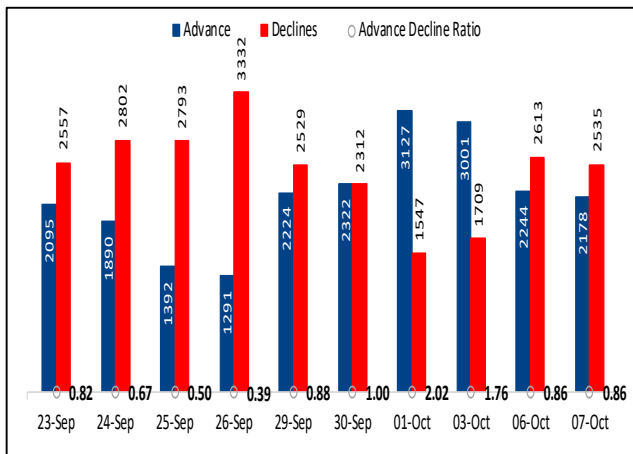


## Nifty50 Index Top Pops & Drops

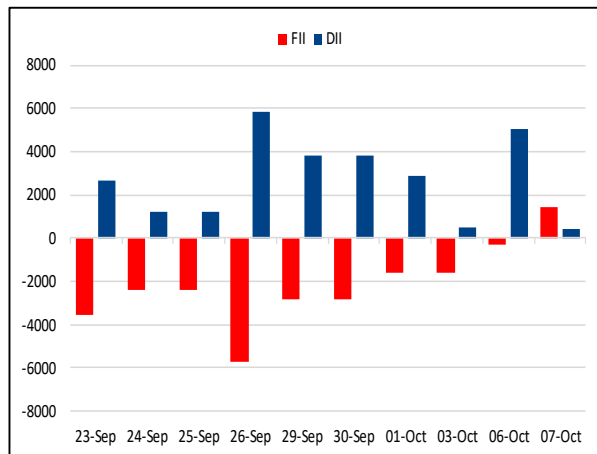
Nifty50 Top Five Gainers			
Symbol	LTP	% Change	Volume
BHARTIARTL	1929.0	1.36	5,713,060
INDUSINDBK	749.0	1.31	4,348,518
BAJAJ-AUTO	8904.0	1.27	490,577
JIOFIN	309.9	1.19	18,717,966
EICHERMOT	6957.0	1.12	286,586

Nifty50 Top Five Losers			
Symbol	LTP	% Change	Volume
AXISBANK	1186.8	-2.14	8,620,156
TATAMOTORS	698.1	-2.05	13,099,357
TATACONSUM	1120.0	-1.94	1,354,474
TRENT	4686.0	-1.91	2,789,651
ADANIENT	2542.2	-1.22	1,120,230

## BSE Advance & Declines



## Institutional Activities



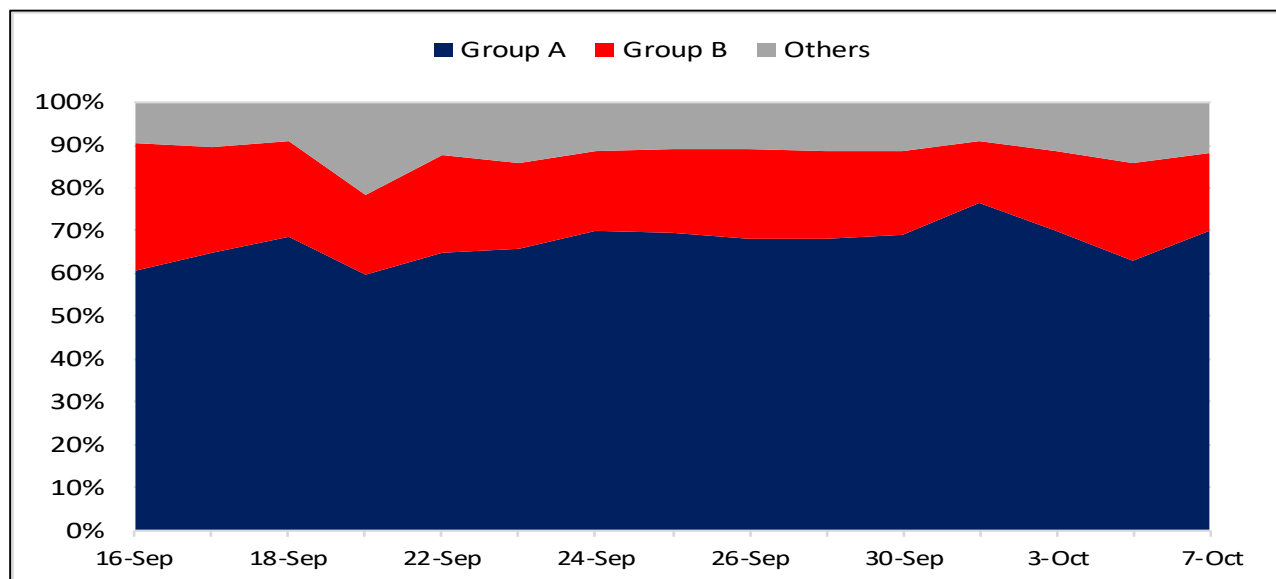
## 52 Week High Stocks

	7-Oct-25	6-Oct-25
BSE Universe	262	273
BSE Group A Stocks Hitting 52 Week High		
Stocks	Price	52 Week High
ABCAPITAL	303.7	307.7
ASTERDM	661.4	679.7
AVALON	1253.6	1316.2
CANBK	128.2	128.6
HINDCOPPER	332.7	348.8




## 52 Week Low Stocks

	7-Oct-25	6-Oct-25
BSE Universe	147	133
BSE Group A Stocks Hitting 52 Week Low		
Stocks	Price	52 Week Low
CLEAN	1060.6	1,055.3
CMSINFO	360.1	359.5
EASEMYTRIP	7.98	8.0
HAPPSTMNDS	498.45	496.7
PDSL	306.95	305.05

## BSE Cash Market Turnover Participant-wise



## News Highly Sensitive to Stock Price

Impact	Stock	News
	<b>Shyam Metalics and Energy Ltd.</b>	Shyam Metalics and Energy Ltd. Reports a 12.2% decrease in sales volumes for September 2025 while average realizations have increased by 1.11% month over month. Quarterly performance shows a 20.77% increase in sales volumes and a 1.22% rise in realizations compared to the previous quarter.
	<b>Tata Motors</b>	Jaguar Land Rover reported a 17% year-on-year decline in retail sales for the second quarter due to a cyber attack that caused production pauses. The company's dispatches to dealers also fell 24% during the July-September period. JLR is now phasing the restart of its manufacturing operations following the incident.
	<b>Saatvik Green Energy</b>	<p>Saatvik Green Energy Limited has received orders worth INR 488 Crores from renowned Independent Power producers/EPC for supply of solar PV modules. These orders will be executed and delivered in FY26.</p> <p>Moreover, its material subsidiary, Saatvik Solar Industries Private Limited has received and accepted orders aggregating to INR 219.62 Crores from three renowned Independent Power producers/EPC for supply of solar PV modules, which will also be executed in FY26.</p>

Stock	News
Coal	India's coal exports surged by 23.4% to 1.908 million tonnes in FY25, driven by growing global demand and government promotion. This increase aims to bolster energy security, achieve self-reliance, and stimulate economic growth by reducing imports and expanding exports to neighboring nations. In value terms, coal exports were worth Rs 1,828.2 crore in FY24 and Rs 1,643.4 crore in FY25.
Rustomjee	The company achieved Pre-Sales of Rs 763 crore in Q2FY26, reflecting a 9% YoY growth and thereby achieving Rs 1831 crore about 46% of full-year FY26 Pre-Sales guidance within the first half. During the quarter, the company launched one project with an estimated GDV of Rs 949 crore in Q2FY26, taking the total to four projects in H1FY26 with a combined estimated GDV of Rs 4916 crore thereby achieving about 70% of full-year FY26 launches guidance within the first half. Redevelopment in Mumbai continues to remain a core strategic focus, offering immense potential for sustained value creation.
Dishman Carbogen Amics	The Company's subsidiary, CARBOGEN AMCIS AG, a pharmaceutical process development and Active Pharmaceutical Ingredient (API) and drug products manufacturing company, is pleased to announce a strategic partnership to offer a fully integrated Antibody-Drug Conjugate (ADC) development and manufacturing solution with Celonic Group. CELONIC GROUP is one of the leading pureplay Biologics CDMO. The alliance combines Celonic's advanced biologics capabilities with Carbogen Amcis' expertise in payload synthesis, conjugation and sterile fill-finish.
Titan	<b><u>Q2FY26 Business Update:</u></b> Domestic business grew 18% YoY. International business shows 86% growth. Consumer business zooms 20%. Jewellery business reports 19% growth. Watch business increases 12%. EyeCare segment registers 9% growth. Emerging business clocks 37% growth. Company adds 54 new domestic stores & 1 new international store during the quarter, expanding combined retail network presence to 3,377 stores
Godrej Consumer Products	<b><u>Q2FY26 Business Update:</u></b> Company expects standalone business to deliver mid-single digit value growth, supported by low-single digit underlying volume growth (UVG). Nearly one-third of company's portfolio now taxed at 5%, down from 18% of GST earlier. Consolidated revenue likely in mid-single digit. GST transition expected to have a short-term impact on profitability, with EBITDA likely to decline for the quarter

Stock	News
<b>Container Corporation of India</b>	Container Corporation of India Ltd. Has signed a strategic agreement with Ultratech Cement Ltd. To transport bulk cement using specialized tank containers. This collaboration aims to promote rail-based cargo movement, enhance logistics efficiency and support sustainable transportation in India.
<b>Snowman Logistics Ltd.</b>	Snowman Logistics Ltd. Announces the commencement of construction for a new temperature-controlled warehouse facility in Pune, set to add 5,900 pallets to its existing capacity.
<b>AIA Engineering</b>	AIA Engineering announced that its wholly-owned step-down subsidiary, Vega Industries Chile SpA, has secured an order worth \$32.90 million (approximately Rs 291 crore) from a copper mining company in Chile. The order is for the supply of High-Chrome Grinding Media and will be executed over 18 months starting November 2025.
<b>Bondada Engineering</b>	Bondada Green Engineering secured a supply order worth Rs 13.75 crore from multiple domestic clients. The company announced that company has received purchase orders from the following domestic entities: Vishwanath Projects, OM Associates, Max Infra (India) and JMR Clean Energy.
<b>Dilip Buildcon</b>	Company announced that its joint venture, DBL-APMPL (with Dilip Buildcon holding 74% and APMPL holding 26%), has received a letter of acceptance (LoA) from the Madhya Pradesh Jal Nigam (MPJNM). The LoA pertains to the development of a 100 MW grid-connected ground-mounted solar PV power project under captive mode, which will supply power to MPJNM for 25 years from the date of commissioning.
<b>Anant Raj</b>	The company has opened its Qualified Institutions Placement (QIP) issue on October 7 with a floor price of Rs 695.83 per share.
<b>IRB Infrastructure Developers</b>	The company has announced toll collections of Rs 556.7 crore for the month of September, marking an 11% increase from Rs 501.8 crore in the same month last year



Stock	News
<b>Lloyds Metals and Energy</b>	The Competition Commission of India has approved the acquisition of a 49.99% stake in Thriveni Pellets by Lloyds Metals and Energy.
<b>Associated Alcohols &amp; Breweries</b>	After obtaining an SL-1 license from the Excise Department, the company has started the manufacture, processing, and maturation of malt spirits at its Barwaha facility.
<b>KPIT Technologies</b>	The company, through its wholly owned subsidiary KPIT Technologies (UK), has acquired a further stake of 62.9%, taking the total KPIT Group shareholding in N-Dream to 88.9% for EUR 16.35 million. As a result, N-Dream has become a step-down subsidiary of the company.
<b>Advait Infratech Energy</b>	The company received an Rs 87 crore order from Power Grid Corporation.
<b>Mangalore Chemicals &amp; Fertilizers</b>	The board sanctions a composite scheme of arrangement with Paradeep Phosphates.
<b>Waaree Energies</b>	The company completes acquisition of 64% stake in Kotsons Private Limited for Rs 192 crore.



## Key Events

### World Bank Raises China's Growth Projections

The World Bank on Tuesday upgraded China's growth outlook for both 2025 and 2026 despite higher trade tariffs, and the lender raised India's projection for the current year on stronger-than-expected public investment but trimmed its forecast for the next fiscal year on higher tariffs. China's GDP growth forecast for this year and next were raised to 4.8 percent and 4.2 percent, respectively. The new forecast for the current year was close to the official target of around 5 percent.

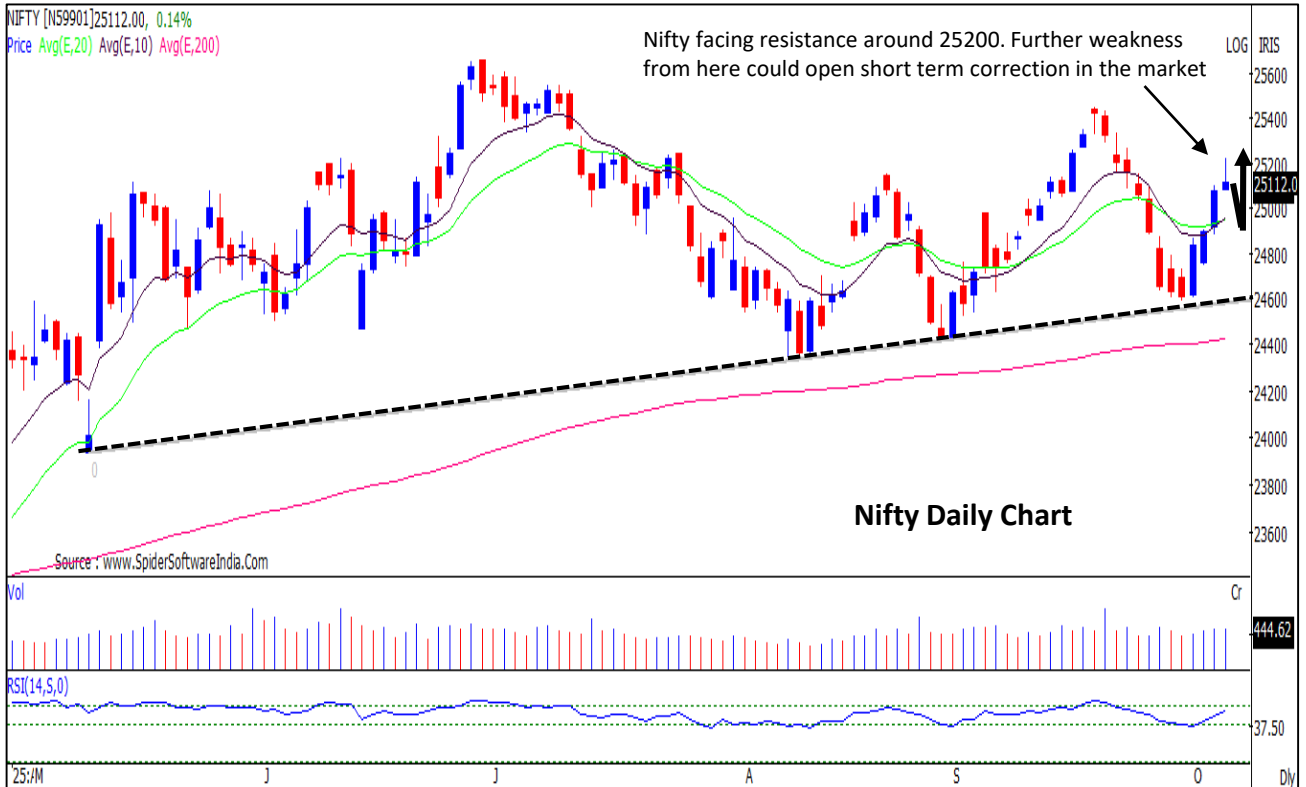
### UK House Prices Fall For First Time In 4 Months

UK house prices decreased for the first time in four months in September as concerns over potential tax increases weighed on the property market activity, the mortgage lender Halifax said Tuesday. House prices fell 0.3 percent on a monthly basis, in contrast to the 0.2 percent increase in August. Prices dropped for the first time since May and confounded expectations for an increase of 0.2 percent.

### US Consumer credit growth slows, falling short of forecasted figures

The latest figures for Consumer Credit have been released, showing a significant slowdown in the growth of outstanding consumer credit requiring installment payments. The actual number reported was a mere 0.36B, a significant decrease from the previous figures. The reported figure of 0.36B is notably lower than the forecasted value of 12.90B. This considerable discrepancy indicates a slowdown in consumer spending and confidence, as Consumer Credit is closely correlated with these factors. The lower than expected reading is likely to be interpreted as a negative or bearish sign for the USD.

**Nifty : The market hit the road block at overhead resistance. Possibility of minor dip before continuing with upside momentum**



**Nifty Realty: Sharp bounce back from the lower range. Higher possibility of further upside towards the trajectory**

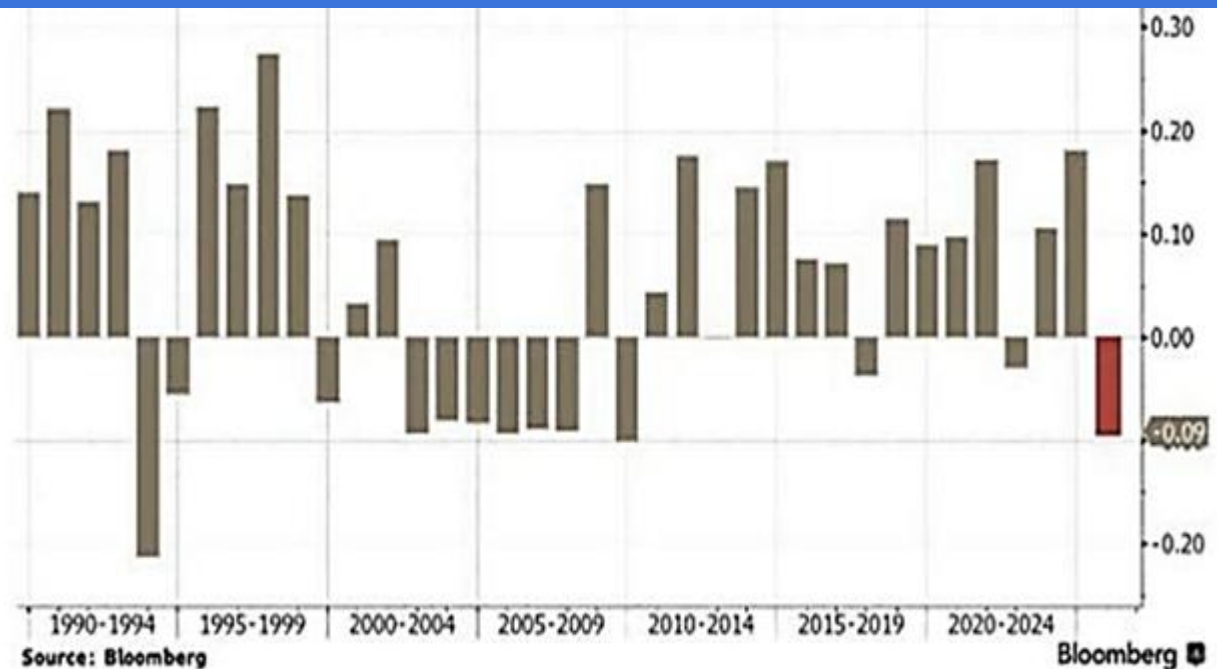


## CHART WITH INTERESTING OBSERVATION

### U.S. Stocks Lag Global Markets by Widest Margin Since 2009

- U.S. stocks are underperforming global peers by the widest margin since 2009, based on the MSCI US Index versus the MSCI ACWI ex-US Index.
- The yearly price gain differential between the MSCI US Index and the MSCI ACWI ex-US Index turned sharply negative, with a -0.09 reading. This suggests global markets have taken the lead over U.S. stocks, reversing a long period of American outperformance seen throughout the 2010s and early 2020s.
- As of 2025, the divergence reflects a combination of stretched U.S. valuations, global monetary easing, and stronger performance in emerging markets and Europe. This marks a significant shift in investor sentiment, as international equities begin to outshine the long-dominant U.S. market.

#### MSCI US vs MSCI ACWI ex-US



Source: Bloomberg, HSL Research

## F&O Highlights

### SHORT COVERING WAS SEEN IN NIFTY FUTURES

#### Create shorts on rise with the SL of 25400 levels.

- Nifty extended its rally for the fourth straight session, rising to an intraday high of 25,220 before late profit booking after 2:15 PM erased most gains. It closed up 30 points at 25,108.
- Short Covering was seen in the Nifty Futures where Open Interest fell by 1.18% with Nifty rising by 0.12%.
- Short Covering was seen in the Bank Nifty Futures where Open Interest fell by 4.84% with Bank Nifty rising by 0.24%.
- Nifty Open Interest Put Call ratio fell to 1.03 levels from 1.08 levels.
- Amongst the Nifty options (14-Oct Expiry), Call writing is seen at 25300-25400 levels, indicating Nifty is likely to find strong resistance in the vicinity of 25300-25400 levels. On the lower side, an immediate support is placed in the vicinity of 25200-25100 levels where we have seen Put writing.
- Short covering was seen by FII's in the Index Futures segment where they net bought worth 1,549 cr with their Open Interest going down by 8056 contracts.

Index	Expected Trend	Prev. Close	Buy/Sell	Stop Loss	Target
NIFTY FUT	DOWN	25225.30	<b>SELL AROUND 25300</b>	<b>25400</b>	<b>25150</b>
BANK NIFTY FUT	DOWN	56468.60	<b>SELL AROUND 56600</b>	<b>56800</b>	<b>56200</b>

Nifty 50 Snapshot			
	07-Oct-25	06-Oct-25	% Chg.
Nifty Spot	25108.30	25077.65	0.12
Nifty Futures	25225.30	25185.40	0.16
Premium/ (Discount)	117.00	107.75	N.A.
Open Interest (OI)	1.94	1.96	-1.18
Nifty PCR	1.03	1.08	-4.54

Bank Nifty Snapshot			
	07-Oct-25	06-Oct-25	% Chg.
Bank Nifty Spot	56239.35	56104.85	0.24
Bank Nifty Futures	56468.60	56297.80	0.30
Premium/ (Discount)	229.25	192.95	N.A.
Open Interest (OI)	0.19	0.20	-4.84
Bank Nifty PCR	1.11	1.13	-1.41

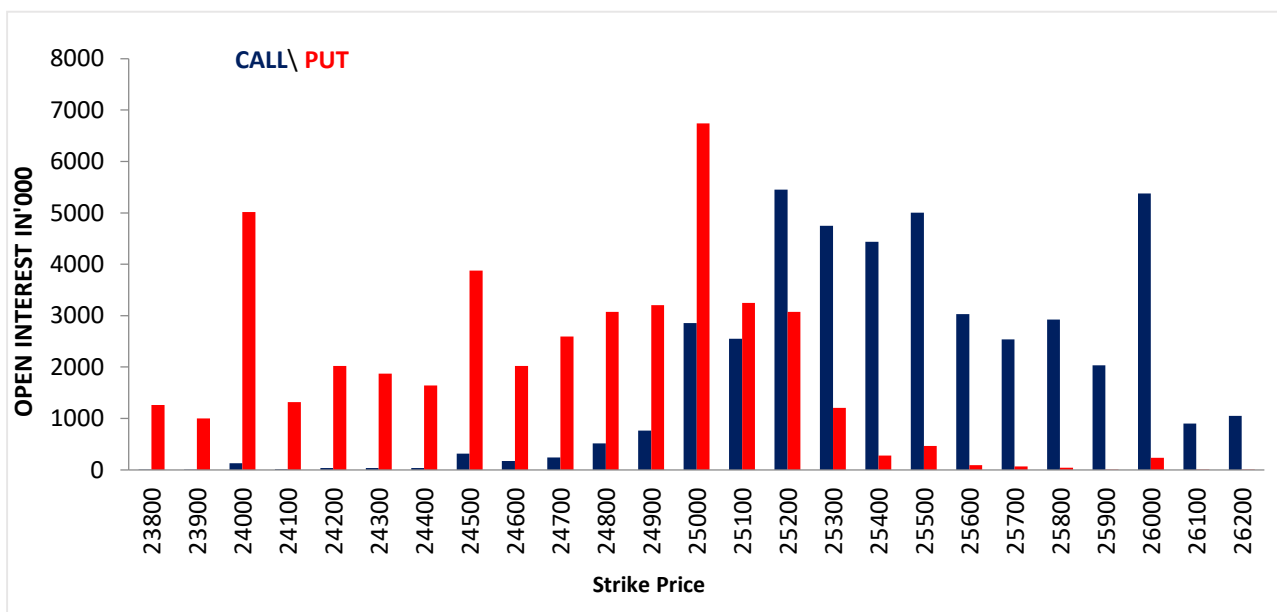
Nifty Options Highest OI (Weekly)			
CALL		PUT	
Strike Price	Open Interest (Contracts)	Strike Price	Open Interest (Contracts)
25200	72704	25000	89887

**FII Activity on 07 Oct 2025**

	BUY		SELL		NET	OPEN INTEREST	
	Contracts	Value (Rs Cr)	Contracts	Value (Rs Cr)	(Rs Cr)	Contracts	Value (Rs Cr)
<b>Index Futures</b>	<b>19681</b>	<b>3779</b>	<b>11633</b>	<b>2230</b>	<b>1549</b>	<b>222134</b>	<b>42137</b>
<b>Nifty Futures</b>	12316	2334	7328	1389	<b>945</b>	170798	32321
<b>Bank Nifty Fut.</b>	6605	1307	3699	732	<b>575</b>	29031	5740
<b>Index Options</b>	<b>21081356</b>	<b>3979171</b>	<b>20999920</b>	<b>3963001</b>	<b>16170</b>	<b>1271011</b>	<b>240882</b>
<b>Nifty Options</b>	20880876	3940358	20797936	3923977	<b>16381</b>	1012110	190593
<b>Bank Nifty Opt.</b>	153506	30328	154021	30360	<b>-33</b>	219280	43163
<b>Stock Futures</b>	<b>250747</b>	<b>17587</b>	<b>271505</b>	<b>19155</b>	<b>-1567</b>	<b>5606573</b>	<b>394110</b>
<b>Stock Options</b>	<b>307813</b>	<b>22767</b>	<b>310937</b>	<b>22949</b>	<b>-182</b>	<b>310151</b>	<b>21653</b>

**FII's Open Interest (Contracts)**

Date	Index Futures	Nifty Futures	Bank Nifty Futures	Index Options	Nifty Options	Bank Nifty Options	Stock Futures	Stock Options
07-Oct-25	<b>222134</b>	170798	29031	<b>1271011</b>	1012110	219280	<b>5606573</b>	<b>310151</b>
06-Oct-25	<b>230190</b>	176986	30673	<b>2126105</b>	1892802	197173	<b>5611943</b>	<b>277595</b>
<b>NET (CONTRACTS)</b>	<b>-8056</b>	<b>-6188</b>	<b>-1642</b>	<b>-855094</b>	<b>-880692</b>	<b>22107</b>	<b>-5370</b>	<b>32556</b>

**Nifty Weekly (14 – Oct) Option Open Interest Distribution**


Top Gainers OI Wise		
Company	Future OI (%)	Price (%)
POWERINDIA	61.11	-3.60
IGL	40.86	5.80
UNOMINDA	17.49	2.28
CAMS	13.71	-0.65
LODHA	10.76	2.68

Top Losers OI Wise		
Company	Future OI (%)	Price (%)
CDSL	-5.85	2.49
ICICIBANK	-4.66	0.92
MANKIND	-4.55	0.99
PAYTM	-4.19	1.09
ULTRACEMCO	-3.65	1.07

Top Gainers Price Wise		
Company	Future OI (%)	Price (%)
IDEA	0.42	8.38
IGL	40.86	5.80
DIVISLAB	-2.37	4.77
TORNTPOWER	-0.61	3.33
TITAGARH	5.98	3.16

Top Losers Price Wise		
Company	Future OI (%)	Price (%)
POWERINDIA	61.11	-3.60
AXISBANK	-0.16	-2.14
JINDALSTEL	7.18	-2.10
BRITANNIA	-1.61	-2.06
TATAMOTORS	-0.27	-2.05

Long Buildup		
Company	Future OI (%)	Price (%)
IGL	40.86	5.80
UNOMINDA	17.49	2.28
LODHA	10.76	2.68
KAYNES	8.63	1.69
TITAGARH	5.98	3.16

Short Buildup		
Company	Future OI (%)	Price (%)
POWERINDIA	61.11	-3.60
CAMS	13.71	-0.65
JINDALSTEL	7.18	-2.10
ANGELONE	6.34	-0.65
TRENT	6.23	-1.91

Long Unwinding		
Company	Future OI (%)	Price (%)
POLYCAB	-2.95	-0.26
KOTAKBANK	-2.59	-0.89
MAXHEALTH	-2.45	-0.79
MFSL	-1.96	-1.14
BRITANNIA	-1.61	-2.06

Short Covering		
Company	Future OI (%)	Price (%)
CDSL	-5.85	2.49
ICICIBANK	-4.66	0.92
MANKIND	-4.55	0.99
PAYTM	-4.19	1.09
ULTRACEMCO	-3.65	1.07

### Securities In Ban For Trade – 08.10.2025

No.	Company Name
1.	RBLBANK

## Economic Calendar

Wednesday	Thursday	Friday	Monday	Tuesday
8 Oct	9 Oct	10 Oct	13 Oct	14 Oct
<b>China: Holiday</b> Japan: BoP Current Account US: MBA Mortgage, FOMC Meeting Minutes	US: Initial & Conti. Jobless Claims, Wholesale Inventory	Japan: PPI US: Univ. of Mich. Sentiments, Federal Budget	<b>US, Japan: Holiday</b> India: CPI China: Trade Balance	UK: Employment Chg India: WPI US: NFIB Busi. Optimism



## Open Derivatives Trading Calls

NO	RECO DT	RECO	COMPANY NAME	BUY RANGE	CMP	SL	TARGET	UPSIDE %	VALID TILL
1	7-OCT-25	SELL	NIFTY OCT FUT	25245-25300	25,229.0	25330	25150	0.3	10-OCT-25
2	7-OCT-25	BUY	MIDCAP NIFTY 28TH OCT 13000 CALL OPTION	206.45	227.0	140.0	320.0	41.0	10-OCT-25
3	3-OCT-25	SELL	COAL INDIA NOV FUT	385.70-393	387.9	400.0	352.0	9.3	27-NOV-25
4	3-OCT-25	BUY	NHPC OCT FUT	87.17-85	87.2	83.5	92.0	5.5	17-OCT-25
5	6-OCT-25	BUY	ETERNAL NOV FUT	329-338.25	341.2	324.0	370.0	8.5	27-NOV-25
6	7-OCT-25	BUY	TORRENT PHARMA OCT FUT	1241.10-1210	1,248.5	1,197.0	1,303.0	4.4	21-OCT-25
7	7-OCT-25	BUY	UNION BANK OCT FUT	139.12-136	139.2	134.0	146.0	4.9	21-OCT-25

## Open Short-Term MTF Calls

NO.	RECO DT.	RECO	COMPANY NAME	BUY RANGE	CMP	Lower Band	SL	TARGET	UPSIDE %	VALID TILL
1	1-OCT-25	BUY	EMBDL	97-96	94.7	93.0	91.0	103.0	8.8	15-OCT-25
2	1-OCT-25	BUY	MINDA CORP	578-584	594.4	564.0	552.0	610.0	2.6	15-OCT-25
3	3-OCT-25	BUY	HAL	4871-4896	4,837.6	4,779.0	4,702.0	5,124.0	5.9	24-OCT-25
4	6-OCT-25	BUY	PSP PROJECT	773-781	784.1	755.0	740.0	822.0	4.8	20-OCT-25
5	6-OCT-25	BUY	M&M FINANCE	282.50-284	282.5	274.5	271.0	298.0	5.5	27-OCT-25
6	7-OCT-25	BUY	TI INDIA	3215-3205	3,218.4	3,125.0	3,065.0	3,390.0	5.3	28-OCT-25

## Open Positional MTF Calls

NO.	RECO DT.	RECO	COMPANY NAME	BUY RANGE	CMP	SL	TARGET 1	TARGET 2	UPSIDE %	VALID TILL
1	18-AUG-25	BUY	INFRA BEES	942-937.80	943.6	900.0	985.0	1015	8	17-OCT-25
2	16-SEP-25	BUY	AADHAR HOUSING FINANCE	531-538	512.9	491.0	578.0	606	18	15-NOV-25
3	16-SEP-25	BUY	PHOENIX	1612-1632	1,611.8	1510.0	1727.0	1775	10	31-OCT-25
4	3-OCT-25	BUY	NELCO	896-887.45	875.4	820.0	978.0	1060	21	2-DEC-25
5	3-OCT-25	BUY	FINO PAYMENT BANK*	286-292	313.9	286.0	315.0	326	4	2-DEC-25
6	6-OCT-25	BUY	IDFC FIRST BANK	72-70.99	72.0	66.5	76.5	82	14	5-DEC-25

\*= 1st Target Achieved

**NSE 200 SUPPORT & RESISTANCE**

SYMBOL	CLOSE	R2	R1	PIVOT	S1	S2	5 DMA	20 DMA	% Delivery	Trend
ABB	5219.5	5390.8	5305.2	5257.3	5171.7	5123.8	5200.7	5259.6	48.3	Bearish
ABCAPITAL	303.5	310.1	306.8	304.5	301.2	299.0	300.7	291.7	52.1	Bullish
ABFRL	85.7	87.3	86.5	85.9	85.0	84.4	86.2	88.4	40.0	Bearish
ACC	1857.6	1875.5	1866.5	1851.1	1842.1	1826.7	1838.6	1850.6	56.7	Bearish
AMBUJACEM	570.0	579.1	574.5	571.3	566.7	563.5	572.2	573.8	44.5	Bearish
ADANIPOWER	151.5	157.5	154.5	152.4	149.4	147.4	149.6	141.4	24.7	Bullish
ADANIENSOL	919.0	955.1	937.0	927.0	909.0	899.0	906.1	869.6	33.7	Bullish
ADANIGREEN	1060.7	1101.2	1081.0	1069.1	1048.9	1037.0	1056.4	1032.6	17.6	Bullish
ADANIENT	2542.2	2648.4	2595.3	2564.2	2511.1	2480.0	2560.8	2495.6	24.3	Bullish
ADANIPORTS	1399.5	1421.6	1410.6	1403.9	1392.9	1386.2	1409.1	1407.6	45.6	Bearish
ASHOKLEY	139.8	142.3	141.1	139.5	138.3	136.7	140.3	138.7	50.6	Bullish
ALKEM	5492.0	5576.0	5534.0	5494.5	5452.5	5413.0	5462.5	5463.7	62.7	Bearish
APLAPOLLO	1736.3	1762.8	1749.6	1739.1	1725.9	1715.4	1726.7	1698.4	74.4	Bullish
APOLLOHOSP	7700.0	7753.0	7726.5	7680.0	7653.5	7607.0	7532.3	7701.4	60.3	Bearish
ASIANPAINT	2352.8	2382.1	2367.5	2356.7	2342.1	2331.3	2350.2	2442.4	52.7	Bearish
APOLLOTYRE	478.5	484.7	481.6	477.3	474.2	469.8	473.4	480.2	40.5	Bearish
AUROPHARMA	1090.1	1114.5	1102.3	1088.6	1076.4	1062.7	1090.0	1093.9	58.0	Bearish
ASTRAL	1419.4	1446.3	1432.8	1411.6	1398.1	1376.9	1385.9	1425.0	36.7	Bearish
ATGL	636.1	664.0	650.0	641.8	627.8	619.6	634.6	638.8	21.1	Bearish
AUBANK	764.0	772.4	768.2	762.4	758.2	752.3	745.0	726.1	70.6	Bullish
AXISBANK	1186.8	1222.3	1204.5	1194.3	1176.5	1166.3	1174.3	1136.7	59.4	Bullish
BAJFINANCE	1016.6	1038.9	1027.7	1018.3	1007.1	997.7	1000.4	997.6	58.4	Bullish
BAJAJHFL	111.1	112.3	111.7	111.3	110.8	110.4	111.2	112.4	56.0	Bearish
BANDHANBNK	164.5	168.2	166.3	165.3	163.4	162.4	164.2	163.2	67.1	Bullish
BDL	1529.6	1581.7	1555.6	1539.0	1512.9	1496.3	1536.9	1553.6	36.7	Bearish
BHARTIARTL	1929.0	1971.0	1950.0	1925.0	1904.0	1879.0	1895.0	1917.2	55.3	Bearish
BHARTIHEXA	1766.3	1849.7	1808.0	1743.0	1701.3	1636.3	1678.8	1702.4	26.9	Bearish
BEL	410.3	418.1	414.2	411.7	407.8	405.2	409.3	401.4	62.8	Bullish
BHEL	244.9	248.3	246.6	244.5	242.8	240.7	242.8	234.4	51.9	Bullish
BHARATFORG	1216.8	1251.1	1234.0	1223.3	1206.2	1195.5	1220.7	1227.4	42.6	Bearish
BIOCON	347.8	352.8	350.3	348.6	346.1	344.4	347.1	356.0	58.8	Bearish
BAJAJ-AUTO	8904.0	8997.7	8950.8	8868.2	8821.3	8738.7	8736.1	8939.4	57.4	Bearish
BAJAJFINSV	2032.6	2066.7	2049.7	2039.3	2022.3	2011.9	2016.0	2045.2	42.5	Bearish
BAJAJHLDNG	12089.0	12353.7	12221.3	12015.7	11883.3	11677.7	11990.6	12862.3	71.4	Bearish
BANKBARODA	261.9	269.3	265.6	263.6	259.9	257.9	262.1	250.0	40.3	Bullish
BANKINDIA	126.2	130.7	128.5	127.2	125.0	123.7	125.2	120.2	42.8	Bullish
MAHABANK	57.2	57.7	57.5	57.2	57.0	56.7	56.6	55.7	48.6	Bullish
BOSCHLTD	38770.0	39296.7	39033.3	38861.7	38598.3	38426.7	38533.0	39363.0	64.9	Bearish
BPCL	341.9	348.3	345.1	343.1	339.9	337.9	341.3	328.5	53.0	Bullish
BRITANNIA	5887.0	6099.0	5993.0	5930.0	5824.0	5761.0	5969.6	6059.2	55.8	Bearish
BSE	2231.2	2312.3	2271.7	2225.9	2185.3	2139.5	2132.8	2160.2	22.6	Bearish
CANBK	128.1	130.2	129.1	127.4	126.4	124.7	125.6	118.4	38.4	Bullish
CONCOR	532.5	537.3	534.9	532.1	529.7	526.9	530.1	541.8	44.8	Bearish
CGPOWER	748.0	758.7	753.4	748.9	743.6	739.1	744.3	765.0	39.5	Bearish
CHOLAFIN	1631.6	1657.9	1644.7	1626.9	1613.7	1595.9	1610.5	1579.0	65.0	Bullish
CIPLA	1513.3	1529.6	1521.5	1513.8	1505.7	1498.0	1512.1	1536.8	63.9	Bearish
COLPAL	2231.4	2250.8	2241.1	2232.7	2223.0	2214.6	2224.3	2306.7	64.5	Bearish
COALINDIA	384.7	391.0	387.8	385.8	382.7	380.7	385.7	391.3	53.3	Bearish
COCHINSHIP	1839.8	1890.5	1865.1	1849.5	1824.1	1808.5	1841.1	1824.0	29.1	Bullish
COFORGE	1686.5	1720.2	1703.3	1675.2	1658.3	1630.2	1630.8	1689.5	50.3	Bearish

**NSE 200 SUPPORT & RESISTANCE**

SYMBOL	CLOSE	R2	R1	PIVOT	S1	S2	5 DMA	20 DMA	% Delivery	Trend
DABUR	492.3	507.9	500.1	495.0	487.2	482.1	493.6	519.0	52.0	Bearish
DIVISLAB	6104.5	6307.2	6205.8	6018.7	5917.3	5730.2	5839.3	5960.2	52.2	Bearish
DIXON	17232.0	17508.7	17370.3	17140.7	17002.3	16772.7	16727.8	17658.0	34.6	Bearish
DLF	737.2	745.1	741.1	735.2	731.2	725.3	727.4	749.6	54.3	Bearish
DMART	4303.0	4381.7	4342.3	4305.7	4266.3	4229.7	4389.7	4586.0	64.5	Bearish
DRREDDY	1248.5	1261.4	1254.9	1249.7	1243.2	1238.0	1242.7	1283.3	75.6	Bearish
EICHERMOT	6957.0	7064.3	7010.7	6945.3	6891.7	6826.3	6961.0	6931.6	46.5	Bullish
ESCORTS	3525.2	3608.8	3567.0	3527.6	3485.8	3446.4	3543.2	3635.6	73.4	Bearish
ETERNAL	337.9	346.0	341.9	337.6	333.5	329.2	331.2	330.1	47.8	Bullish
EXIDEIND	402.9	414.2	408.5	403.3	397.6	392.4	397.3	407.3	31.9	Bearish
FEDERALBNK	199.2	203.6	201.4	197.7	195.5	191.9	194.4	194.9	40.4	Bearish
GAIL	179.9	182.6	181.2	178.9	177.5	175.2	176.9	177.7	46.9	Bearish
GODREJCP	1152.8	1172.7	1162.7	1151.2	1141.2	1129.7	1153.0	1206.6	58.0	Bearish
GMRAIRPORT	88.4	89.5	89.0	88.6	88.0	87.6	88.6	89.2	50.6	Bearish
GLENMARK	1962.6	1986.7	1974.6	1961.4	1949.3	1936.1	1965.2	2038.0	61.6	Bearish
GODREJPROP	2073.3	2103.6	2088.5	2060.9	2045.8	2018.2	2032.4	2032.7	41.9	Bearish
GRASIM	2808.0	2842.5	2825.2	2807.8	2790.5	2773.1	2790.7	2807.5	44.0	Bearish
HAVELLS	1502.3	1513.2	1507.8	1502.7	1497.3	1492.2	1495.1	1551.2	53.3	Bearish
HCLTECH	1433.4	1455.5	1444.5	1430.8	1419.8	1406.1	1403.8	1437.8	53.5	Bearish
HDFCAMC	5556.5	5753.5	5655.0	5590.0	5491.5	5426.5	5579.3	5724.3	58.9	Bearish
HDFCBANK	982.5	1000.0	991.2	981.1	972.4	962.3	967.5	963.3	61.7	Bullish
HDFCLIFE	755.6	776.5	766.0	759.6	749.1	742.7	759.7	769.8	64.0	Bearish
HEROMOTOCO	5615.0	5688.7	5651.8	5612.2	5575.3	5535.7	5530.4	5391.1	61.2	Bullish
HAL	4837.6	4903.7	4870.7	4839.8	4806.8	4775.9	4820.6	4766.2	55.1	Bullish
HINDALCO	767.8	786.3	777.1	771.5	762.2	756.6	770.6	753.4	49.5	Bullish
HINDPETRO	454.3	469.7	462.0	457.5	449.8	445.3	446.9	419.6	40.0	Bullish
HUDCO	231.4	236.0	233.7	231.0	228.8	226.1	230.4	225.9	46.2	Bullish
HINDUNILVR	2517.2	2579.4	2548.3	2528.3	2497.2	2477.2	2530.9	2560.6	58.8	Bearish
HYUNDAI	2454.4	2507.1	2480.8	2454.8	2428.5	2402.5	2512.9	2610.9	63.5	Bearish
HINDZINC	489.9	497.5	493.7	489.4	485.6	481.3	487.3	462.9	47.2	Bullish
ICICIBANK	1375.9	1393.7	1384.8	1374.2	1365.3	1354.7	1364.9	1389.9	66.7	Bearish
ICICIGI	1906.0	1954.7	1930.4	1915.6	1891.3	1876.5	1907.4	1888.3	71.3	Bullish
IDEA	9.2	9.8	9.5	9.0	8.6	8.1	8.6	8.2	27.6	Bullish
IDFCFIRSTB	72.0	72.8	72.4	71.7	71.3	70.6	70.2	71.0	52.1	Bearish
IGL	220.1	230.9	225.5	216.8	211.4	202.7	211.0	211.1	34.3	Bearish
INDHOTEL	733.3	744.1	738.7	729.8	724.4	715.6	725.0	753.4	65.0	Bearish
INDUSINDBK	749.0	759.2	754.1	747.3	742.2	735.3	742.9	740.5	52.2	Bullish
INDIANB	757.7	768.3	763.0	759.2	753.9	750.1	753.9	713.6	49.2	Bullish
INDIGO	5664.0	5739.0	5701.5	5656.0	5618.5	5573.0	5643.2	5678.6	53.7	Bearish
INDUSTOWER	357.9	365.3	361.6	356.1	352.4	347.0	351.9	353.8	52.6	Bearish
INFY	1458.5	1494.0	1476.3	1465.1	1447.4	1436.2	1453.7	1491.5	42.7	Bearish
NAUKRI	1383.6	1402.0	1392.8	1380.9	1371.7	1359.8	1349.1	1362.6	58.6	Bearish
IOC	154.4	156.6	155.5	154.6	153.5	152.7	151.8	147.1	50.6	Bullish
ICICIPRULI	603.5	613.4	608.5	604.8	599.8	596.1	599.4	599.5	53.5	Bearish
IRB	41.5	42.3	41.9	41.7	41.2	41.0	41.6	42.5	52.5	Bearish
IRCTC	716.9	723.4	720.2	714.7	711.5	706.0	708.2	717.7	50.5	Bearish
IREDA	152.4	155.0	153.7	152.1	150.8	149.2	151.8	151.7	30.0	Bullish
IRFC	127.1	129.0	128.0	126.5	125.6	124.1	125.4	126.4	37.0	Bearish
ITC	399.8	403.7	401.8	400.6	398.7	397.5	402.4	407.2	68.9	Bearish
JIOFIN	309.9	319.1	314.5	310.4	305.8	301.7	302.2	307.8	34.6	Bearish

**NSE 200 SUPPORT & RESISTANCE**

SYMBOL	CLOSE	R2	R1	PIVOT	S1	S2	5 DMA	20 DMA	% Delivery	Trend
JINDALSTEL	1033.7	1070.6	1052.1	1041.0	1022.6	1011.5	1059.0	1047.2	40.1	Bearish
JSWSTEEL	1156.8	1180.1	1168.5	1161.3	1149.7	1142.5	1153.4	1127.4	44.8	Bullish
JSWENERGY	548.1	566.9	557.5	548.0	538.6	529.2	539.3	532.9	45.0	Bullish
JUBLFOOD	613.9	635.7	624.8	618.0	607.1	600.3	620.5	628.1	65.9	Bearish
KALYANKJIL	487.7	499.5	493.6	487.3	481.4	475.0	477.0	490.5	20.6	Bearish
CUMMINSIND	3967.4	4027.3	3997.3	3950.1	3920.1	3872.9	3923.7	4004.7	55.2	Bearish
KOTAKBANK	2126.9	2165.3	2146.1	2133.9	2114.7	2102.5	2085.9	2026.8	57.3	Bullish
KPITTECH	1170.5	1191.4	1181.0	1162.5	1152.1	1133.6	1147.2	1229.7	49.2	Bearish
LICHSGFIN	566.7	588.6	577.6	571.2	560.2	553.7	572.8	573.3	56.2	Bearish
LICI	912.4	926.9	919.6	913.4	906.1	899.9	905.8	891.0	54.3	Bullish
LODHA	1145.0	1185.4	1165.2	1132.0	1111.8	1078.6	1129.7	1170.4	69.5	Bearish
LUPIN	1924.8	1957.7	1941.3	1929.9	1913.5	1902.1	1945.7	1987.3	63.0	Bearish
LT	3729.7	3781.2	3755.5	3740.2	3714.5	3699.2	3705.8	3653.1	50.7	Bullish
LTF	259.3	262.8	261.1	259.9	258.1	256.9	257.9	245.3	31.9	Bullish
LTIM	5269.0	5587.3	5428.2	5341.8	5182.7	5096.3	5188.7	5270.5	37.5	Bearish
MANKIND	2480.7	2515.2	2497.9	2470.5	2453.2	2425.8	2452.1	2541.1	66.5	Bearish
MFSL	1587.1	1623.8	1605.5	1593.4	1575.1	1563.0	1598.9	1579.5	70.5	Bullish
MAXHEALTH	1130.7	1153.6	1142.1	1128.6	1117.1	1103.6	1113.5	1146.0	58.8	Bearish
MAZADOCK	2877.7	2931.8	2904.7	2885.0	2857.9	2838.2	2850.0	2880.3	26.1	Bearish
M&M	3492.8	3549.4	3521.1	3493.1	3464.8	3436.8	3463.4	3546.4	45.7	Bearish
M&MFIN	282.5	289.0	285.8	282.1	278.9	275.2	278.2	278.3	63.4	Bearish
MOTILALOFS	937.4	956.3	946.9	937.5	928.1	918.7	915.5	924.5	45.7	Bearish
MOTHERSON	104.1	108.0	106.1	104.8	102.9	101.6	105.7	106.3	66.2	Bearish
MPHASIS	2817.7	2849.8	2833.8	2805.9	2789.9	2762.0	2738.5	2830.2	67.6	Bearish
MARICO	715.0	726.8	720.9	716.1	710.2	705.4	708.1	715.5	58.9	Bearish
MRF	153720.0	156233.3	154976.7	153043.3	151786.7	149853.3	150765.0	149805.8	31.7	Bullish
MARUTI	16108.0	16263.3	16185.7	16081.3	16003.7	15899.3	15981.2	15791.0	64.0	Bullish
MUTHOOTFIN	3242.6	3284.7	3263.7	3236.8	3215.8	3188.9	3171.9	3029.8	48.0	Bullish
NATIONALUM	217.1	221.7	219.4	217.7	215.4	213.7	216.8	212.0	37.6	Bullish
NESTLEIND	1176.8	1198.5	1187.7	1181.3	1170.5	1164.1	1169.5	1187.7	45.0	Bearish
NHPC	86.5	87.7	87.1	86.6	86.0	85.6	86.5	85.5	68.6	Bullish
NMDC	76.1	77.5	76.8	76.2	75.5	75.0	76.4	76.1	46.7	Bearish
NTPC	338.0	343.3	340.7	338.8	336.1	334.2	340.0	337.0	74.7	Bullish
NTPCGREEN	98.5	99.5	99.0	98.4	97.9	97.3	97.9	101.5	53.8	Bearish
NYKAA	262.4	272.1	267.3	260.7	255.9	249.3	246.2	241.0	50.4	Bullish
OBEROIRLTY	1636.6	1654.1	1645.3	1633.2	1624.4	1612.3	1608.4	1624.2	62.8	Bearish
OFSS	9332.5	9541.8	9437.2	9260.3	9155.7	8978.8	8903.0	8942.0	48.2	Bearish
OIL	422.5	433.0	427.7	423.2	417.9	413.4	416.3	406.1	27.7	Bullish
OLAELEC	52.6	54.9	53.8	53.1	52.0	51.3	54.4	57.0	100.0	Bearish
ONGC	245.3	251.3	248.3	246.5	243.5	241.7	243.5	237.7	56.5	Bullish
PAGEIND	41695.0	42665.0	42180.0	41900.0	41415.0	41135.0	41912.0	43154.8	58.6	Bearish
PATANJALI	597.3	609.1	603.2	597.1	591.2	585.1	588.0	596.7	47.4	Bearish
PAYTM	1237.6	1269.3	1253.5	1238.7	1222.9	1208.1	1180.4	1190.7	47.0	Bearish
PRESTIGE	1530.6	1564.2	1547.4	1534.7	1517.9	1505.2	1530.8	1567.3	60.3	Bearish
PHOENIXLTD	1611.8	1630.9	1621.4	1605.3	1595.8	1579.7	1577.6	1584.2	63.4	Bearish
PIIND	3582.8	3676.2	3629.5	3596.7	3550.0	3517.2	3585.6	3643.7	71.3	Bearish
PIDILITIND	1470.9	1495.9	1483.4	1476.5	1464.0	1457.1	1478.6	1509.0	70.1	Bearish
PETRONET	287.6	293.3	290.4	285.9	283.1	278.6	280.0	277.0	46.1	Bullish
PNB	114.2	115.7	114.9	114.3	113.6	113.0	113.7	110.7	46.8	Bullish
POLICYBZR	1765.0	1834.2	1799.6	1753.3	1718.7	1672.4	1713.7	1764.6	47.4	Bearish

**NSE 200 SUPPORT & RESISTANCE**

SYMBOL	CLOSE	R2	R1	PIVOT	S1	S2	5 DMA	20 DMA	% Delivery	Trend
POLYCAB	7595.5	7679.8	7637.7	7596.3	7554.2	7512.8	7448.2	7397.1	44.9	Bullish
PFC	408.8	411.7	410.2	408.1	406.6	404.5	409.7	405.1	54.9	Bullish
PREMIERENE	1019.2	1036.3	1027.7	1021.9	1013.3	1007.5	1024.5	1039.1	57.3	Bearish
PERSISTENT	5271.2	5359.7	5315.5	5245.7	5201.5	5131.7	5061.4	5238.3	37.6	Bearish
POWERGRID	289.0	294.7	291.9	289.5	286.6	284.2	285.3	286.0	60.3	Bearish
RECLTD	377.8	382.5	380.1	378.1	375.8	373.8	377.3	377.7	54.3	Bearish
RELIANCE	1384.8	1405.5	1395.2	1385.5	1375.2	1365.5	1371.2	1385.7	39.8	Bearish
RVNL	354.9	361.8	358.3	352.7	349.2	343.5	346.5	347.5	23.9	Bearish
SAIL	132.9	135.9	134.4	132.8	131.4	129.8	134.0	133.5	49.0	Bearish
SBICARD	905.2	925.8	915.5	903.7	893.4	881.7	890.5	876.9	49.6	Bullish
SBILIFE	1784.1	1805.4	1794.8	1783.0	1772.4	1760.6	1786.4	1810.8	60.2	Bearish
SBIN	864.7	882.2	873.5	868.2	859.5	854.2	868.5	851.4	44.2	Bullish
SHRIRAMFIN	666.8	677.3	672.0	667.8	662.5	658.3	649.8	627.0	56.4	Bullish
SUPREMEIND	4226.9	4348.3	4287.6	4233.2	4172.5	4118.1	4203.6	4341.1	30.4	Bearish
SIEMENS	3250.8	3294.5	3272.7	3240.3	3218.5	3186.1	3183.5	3212.7	48.9	Bearish
SJVN	90.5	91.5	91.0	90.7	90.2	89.9	90.8	92.5	43.1	Bearish
SOLARINDS	14143.0	14301.0	14222.0	14121.0	14042.0	13941.0	13767.2	14124.3	42.8	Bearish
SONACOMS	414.1	424.5	419.3	415.8	410.6	407.1	414.7	424.8	58.8	Bearish
SHREECEM	29530.0	29940.0	29735.0	29545.0	29340.0	29150.0	29313.0	29586.8	52.9	Bearish
SRF	2964.8	2993.5	2979.1	2959.7	2945.3	2925.9	2911.0	2917.8	57.6	Bearish
SUZLON	54.0	55.1	54.6	54.3	53.7	53.4	54.6	57.0	49.4	Bearish
SUNPHARMA	1653.1	1670.4	1661.7	1654.4	1645.7	1638.4	1633.9	1621.2	66.7	Bullish
SWIGGY	420.8	427.5	424.1	419.3	415.9	411.1	419.4	430.4	60.9	Bearish
TATASTEEL	171.4	173.1	172.3	171.3	170.5	169.5	170.2	170.5	47.7	Bearish
TATACONSUM	1120.0	1156.3	1138.2	1126.7	1108.6	1097.1	1134.7	1121.5	62.3	Bearish
TATATECH	713.0	723.0	718.0	713.5	708.5	704.1	698.2	698.3	55.4	Bearish
TATACOMM	1662.5	1687.4	1674.9	1662.5	1650.0	1637.6	1632.3	1641.9	48.0	Bearish
TCS	2973.7	3026.9	3000.3	2977.9	2951.3	2928.9	2933.3	3039.2	48.7	Bearish
TECHM	1438.9	1456.3	1447.6	1437.1	1428.4	1417.9	1419.0	1478.1	57.7	Bearish
TATAELXSI	5389.5	5490.8	5440.2	5376.8	5326.2	5262.8	5318.4	5536.3	43.7	Bearish
TIINDIA	3218.4	3290.1	3254.3	3202.1	3166.3	3114.1	3137.1	3237.5	48.4	Bearish
TORNTPOWER	1240.0	1274.7	1257.4	1228.7	1211.4	1182.7	1219.2	1250.3	40.7	Bearish
TATAPOWER	392.5	400.0	396.3	393.8	390.0	387.5	392.6	390.8	51.2	Bullish
TRENT	4686.0	4797.9	4741.9	4666.0	4610.0	4534.1	4757.7	4957.7	37.7	Bearish
TORNTPHARM	3536.9	3593.6	3565.3	3526.6	3498.3	3459.6	3549.6	3577.3	70.3	Bearish
TITAN	3418.2	3459.9	3439.1	3425.0	3404.2	3390.1	3414.4	3474.7	68.8	Bearish
TATAMOTORS	698.1	718.5	708.3	702.7	692.5	687.0	705.1	701.3	52.8	Bearish
TVSMOTOR	3513.5	3564.0	3538.8	3516.6	3491.4	3469.2	3475.4	3487.5	51.2	Bearish
UNIONBANK	138.5	140.5	139.5	138.1	137.1	135.7	138.0	136.3	40.8	Bullish
UNITDSPR	1351.8	1372.5	1362.2	1354.6	1344.3	1336.7	1349.3	1328.8	65.5	Bullish
UPL	679.9	687.8	683.8	681.4	677.5	675.1	670.5	682.3	60.2	Bearish
ULTRACEMCO	12184.0	12324.7	12254.3	12139.7	12069.3	11954.7	12115.0	12338.6	61.4	Bearish
VBL	440.0	444.7	442.3	439.3	437.0	434.0	441.8	459.0	54.7	Bearish
VEDL	471.9	479.1	475.5	472.9	469.2	466.6	468.9	455.4	46.7	Bullish
VMM	149.6	152.2	150.9	149.7	148.4	147.2	149.6	149.4	58.7	Bullish
VOLTAS	1372.2	1389.9	1381.0	1368.6	1359.7	1347.3	1361.3	1385.5	61.0	Bearish
WAAREEENER	3402.8	3489.6	3446.2	3408.1	3364.7	3326.6	3388.7	3457.9	29.9	Bearish
WIPRO	243.5	246.4	245.0	243.6	242.1	240.7	241.4	247.6	50.0	Bearish
YESBANK	22.2	22.6	22.4	22.2	22.0	21.8	21.8	21.2	48.5	Bullish
ZYDUSLIFE	987.9	1010.9	999.4	990.5	979.0	970.2	988.8	1020.0	47.2	Bearish

**Disclosure & Disclaimer :**

HDFC Securities Limited (HSL) is a SEBI Registered Research Analyst having registration no. INH000002475.

This report has been prepared by HDFC Securities Ltd and is solely for information of the recipient only. The report must not be used as a singular basis of any investment decision. The views herein are of a general nature and do not consider the risk appetite or the particular circumstances of an individual investor; readers are requested to take professional advice before investing. "This report may have been refined using AI tools to enhance clarity and readability."

Nothing in this document should be construed as investment advice. Each recipient of this document should make such investigations as they deem necessary to arrive at an independent evaluation of an investment in securities of the companies referred to in this document (including merits and risks) and should consult their own advisors to determine merits and risks of such investment. The information and opinions contained herein have been compiled or arrived at, based upon information obtained in good faith from sources believed to be reliable. Such information has not been independently verified and no guaranty, representation of warranty, express or implied, is made as to its accuracy, completeness or correctness. All such information and opinions are subject to change without notice. Descriptions of any company or companies or their securities mentioned herein are not intended to be complete. HSL is not obliged to update this report for such changes. HSL has the right to make changes and modifications at any time.

This report is not directed to, or intended for display, downloading, printing, reproducing or for distribution to or use by, any person or entity who is a citizen or resident or located in any locality, state, country or other jurisdiction where such distribution, publication, reproduction, availability or use would be contrary to law or regulation or what would subject HSL or its affiliates to any registration or licensing requirement within such jurisdiction.

If this report is inadvertently sent or has reached any person in such country, especially, United States of America, the same should be ignored and brought to the attention of the sender. This document may not be reproduced, distributed or published in whole or in part, directly or indirectly, for any purposes or in any manner.

Foreign currencies denominated securities, wherever mentioned, are subject to exchange rate fluctuations, which could have an adverse effect on their value or price, or the income derived from them. In addition, investors in securities such as ADRs, the values of which are influenced by foreign currencies effectively assume currency risk. It should not be considered to be taken as an offer to

sell or a solicitation to buy any security.

This document is not, and should not, be construed as an offer or solicitation of an offer, to buy or sell any securities or other financial instruments. This report should not be construed as an invitation or solicitation to do business with HSL. HSL may from time to time solicit from, or perform broking, or other services for, any company mentioned in this mail and/or its attachments.

HSL and its affiliated company(ies), their directors and employees may; (a) from time to time, have a long or short position in, and buy or sell the securities of the company(ies) mentioned herein or (b) be engaged in any other transaction involving such securities and earn brokerage or other compensation or act as a market maker in the financial instruments of the company(ies) discussed herein or act as an advisor or lender/borrower to such company(ies) or may have any other potential conflict of interests with respect to any recommendation and other related information and opinions.

HSL, its directors, analysts or employees do not take any responsibility, financial or otherwise, of the losses or the damages sustained due to the investments made or any action taken on basis of this report, including but not restricted to, fluctuation in the prices of shares and bonds, changes in the currency rates, diminution in the NAVs, reduction in the dividend or income, etc.

HSL and other group companies, its directors, associates, employees may have various positions in any of the stocks, securities and financial instruments dealt in the report, or may make sell or purchase or other deals in these securities from time to time or may deal in other securities of the companies / organizations described in this report. As regards the associates of HSL please refer the website.

HSL or its associates might have managed or co-managed public offering of securities for the subject company or might have been mandated by the subject company for any other assignment in the past twelve months.

Please note that HDFC Securities has a proprietary trading desk. This desk maintains an arm's length distance with the Research team and all its activities are segregated from Research activities. The proprietary desk operates independently, potentially leading to investment decisions that may deviate from research views.



HSL or its associates might have received any compensation from the companies mentioned in the report during the period preceding twelve months from the date of this report for services in respect of managing or co-managing public offerings, corporate finance, investment banking or merchant banking, brokerage services or other advisory service in a merger or specific transaction in the normal course of business.

HSL or its analysts did not receive any compensation or other benefits from the companies mentioned in the report or third party in connection with preparation of the research report. Accordingly, neither HSL nor Research Analysts have any material conflict of interest at the time of publication of this report. Compensation of our Research Analysts is not based on any specific merchant banking, investment banking or brokerage service transactions. HSL may have issued other reports that are inconsistent with and reach different conclusion from the information presented in this report.

Research entity has not been engaged in market making activity for the subject company. Research analyst has not served as an officer, director or employee of the subject company. We have not received any compensation/benefits from the subject company or third party in connection with the Research Report.

HDFC securities Limited, I Think Techno Campus, Building - B, "Alpha", Office Floor 8, Near Kanjurmarg Station, Opp. Crompton Greaves, Kanjurmarg (East), Mumbai 400 042 Phone: (022) 3075 3400 Fax: (022) 2496 5066

Compliance Officer: Murli V Karkera Email: [complianceofficer@hdfcsec.com](mailto:complianceofficer@hdfcsec.com) Phone: (022) 3045 3600

For grievance redressal contact Customer Care Team Email: [customercare@hdfcsec.com](mailto:customercare@hdfcsec.com) Phone: (022) 3901 9400

HDFC Securities Limited, SEBI Reg. No.: NSE, BSE, MSEI, MCX: INZ000186937; AMFI Reg. No. ARN: 13549; PFRDA Reg. No. POP: 11092018; IRDA Corporate Agent License No.: CA0062; SEBI Research Analyst Reg. No.: INH000002475; SEBI Investment Adviser Reg. No.: INA000011538; CIN - U67120MH2000PLC152193

Investment in securities market are subject to market risks. Read all the related documents carefully before investing.

Mutual Funds Investments are subject to market risk. Please read the offer and scheme related documents carefully before investing.

Registration granted by SEBI, membership of BASL (in case of IAs) and certification from NISM in no way guarantee performance of the intermediary or provide any assurance of returns to investors.